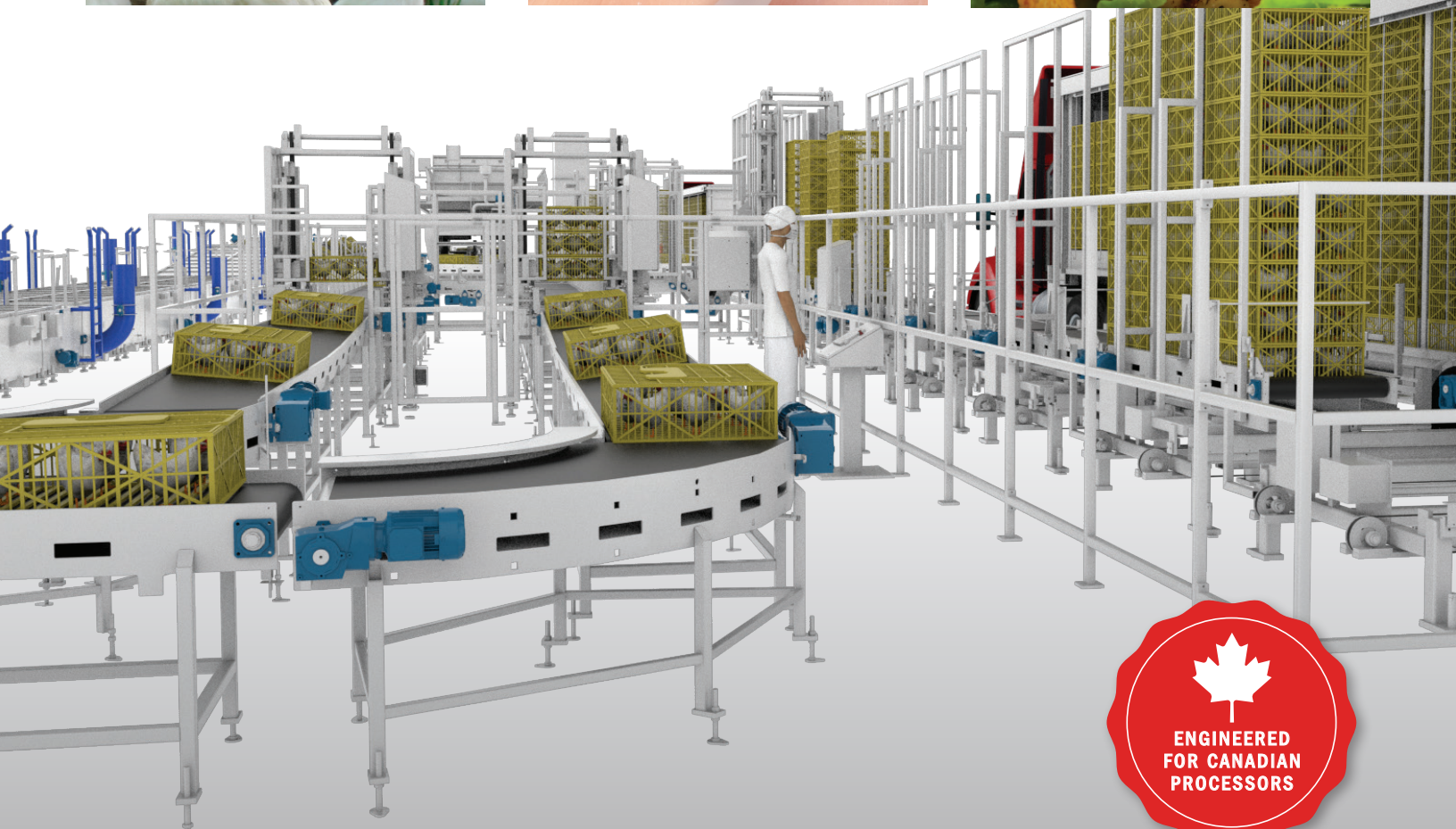
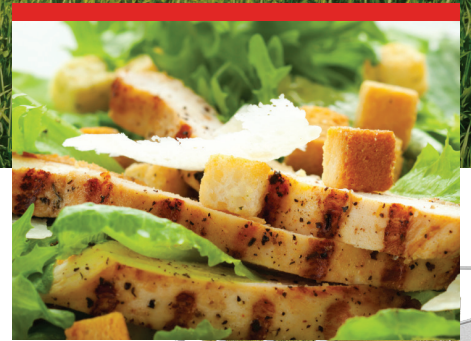


Humane-Aire[®]

Controlled Atmosphere Stunning System

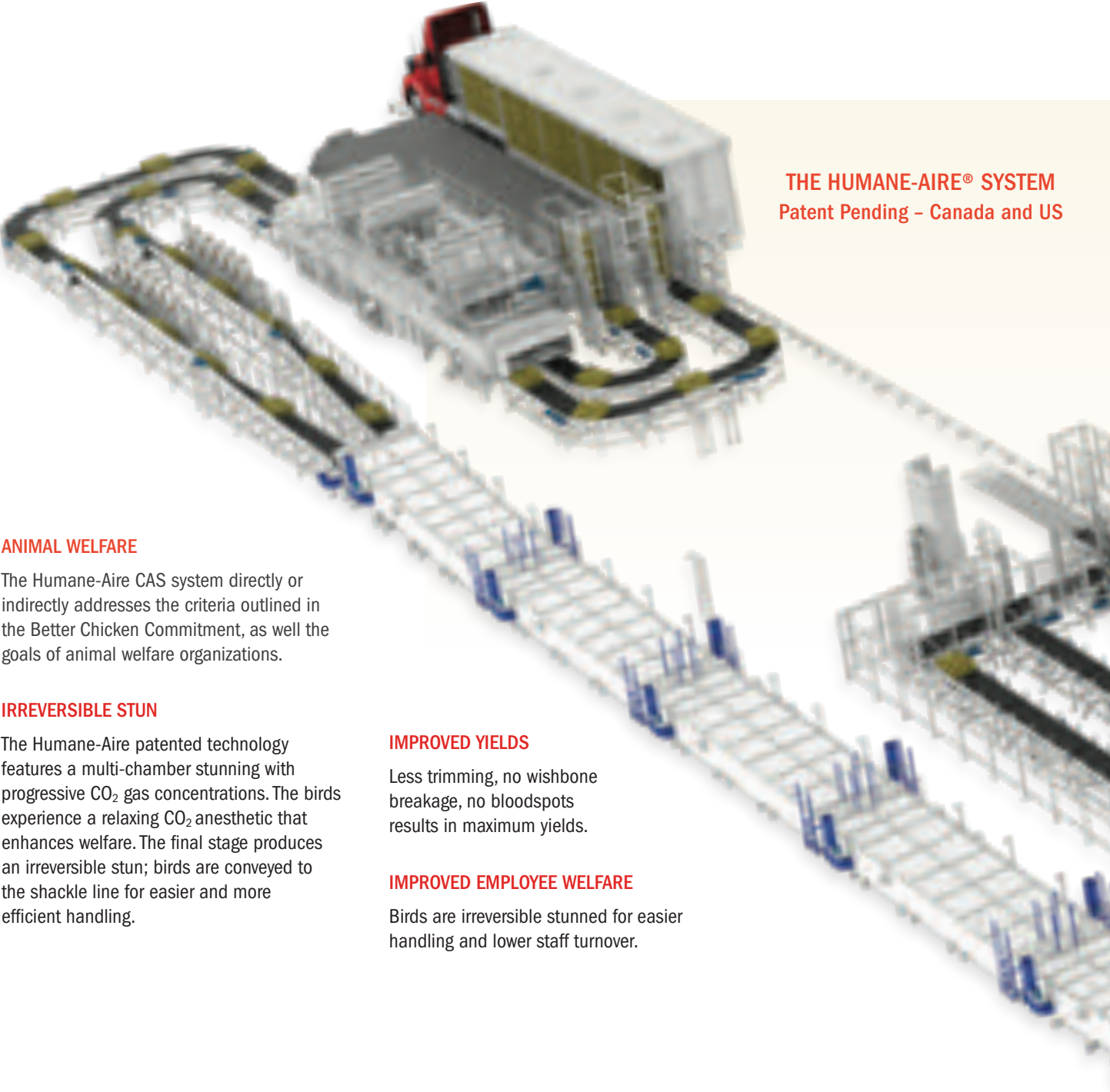
A New Day for Canadian Poultry Processing



The Proven System for Higher Quality Protein, Higher Yields and Improved Animal Welfare.

Proven in turkey and chicken processing over the past 22 years, the Humane-Aire® system is the most advanced controlled atmosphere stunning system that addresses the need for sustainable processing while also meeting the demands for improved animal welfare. Crates are off-loaded in the production area, destacked then conveyed through the CAS tunnel. After the crate exits the tunnel, the stunned birds are transferred onto the shackling conveyor. The crate is then washed, restacked and loaded back on the trailer.

The Humane-Aire CAS System provides an excellent return on your investment. The patented, multi-stage Humane-Aire CAS System is designed for operator and animal welfare...while meeting production requirements for the global demand for quality protein.



ANIMAL WELFARE

The Humane-Aire CAS system directly or indirectly addresses the criteria outlined in the Better Chicken Commitment, as well the goals of animal welfare organizations.

IRREVERSIBLE STUN

The Humane-Aire patented technology features a multi-chamber stunning with progressive CO₂ gas concentrations. The birds experience a relaxing CO₂ anesthetic that enhances welfare. The final stage produces an irreversible stun; birds are conveyed to the shackle line for easier and more efficient handling.

IMPROVED YIELDS

Less trimming, no wishbone breakage, no bloodspots results in maximum yields.

IMPROVED EMPLOYEE WELFARE

Birds are irreversible stunned for easier handling and lower staff turnover.



LESS CHAOTIC PROCESSING

Eliminating fluttering and stressed bird handling translates to minimal dust, feathers, dirt, excrement, noise, and debris.

BIRDS REMAIN IN CRATES

Birds remain in crates from farm to shackle.

RECYCLE CO₂ FOR LOWER COSTS

Greater effectiveness in stunning, through specially designed tunnel, which results in efficient use of recycled CO₂.

MAINTAINS CONSTANT CYCLE SPEED

Controlled cycle time assures consistent picking of a relaxed bird, optimizing your live bird investment and optimizing processing flow.

PROVEN PERFORMANCE

More than two decades of proven performance among top turkey and chicken processors.

READILY AVAILABLE PARTS AND SERVICE

All replacement parts meet high quality standards through strict material and tight tolerance checks.

IMPROVED EFFICIENCY

Humane-Aire improves meat quality which reduces labor and improves efficiency through the plant.

TRAILERS MADE IN CANADA

Fully covered high capacity drop deck trailer specially designed for auto-unloading.



PROPRIETARY CRATES MADE IN CANADA

Humane Aire can assist your specific requirements for plastic top loading poultry crates.



WITHOUT HUMANE-AIRE

Hemorrhaging, Inconsistent Color and Muscle



WITH HUMANE-AIRE

Relaxed, Tender, Consistent Muscle



Manufacturing Plant
State Street Location

Designed and manufactured in the US, Humane-Aire is supported by a comprehensive machine and fabrication facility, as well a dedicated 80,000 sq. ft. for start-up, proof of performance or address any requested MCOs.



Assembly Plant
Centennial Street Location



It's very stressful hanging chickens on the line, and you also have to make sure that people aren't abusing chickens. Now, with controlled atmosphere stunning, the birds come in the travel container and stay in the container until they are dead, so you have gotten rid of some of the problems," Grandin says. "It's a much better working environment for employees. They don't have to work in the dark and they don't have all of the feathers and flapping."

Source:
Interview with Grandin Temple
Meat and Poultry 07.16.19



Equipment Test at the
Assembly Plant

Humane-Aire®
Controlled Atmosphere Stunning System

MIDWAY MACHINE

555 N. State Street | Zeeland, MI 49464

616.772.0808 | humanaire.com | info@humanaire.com